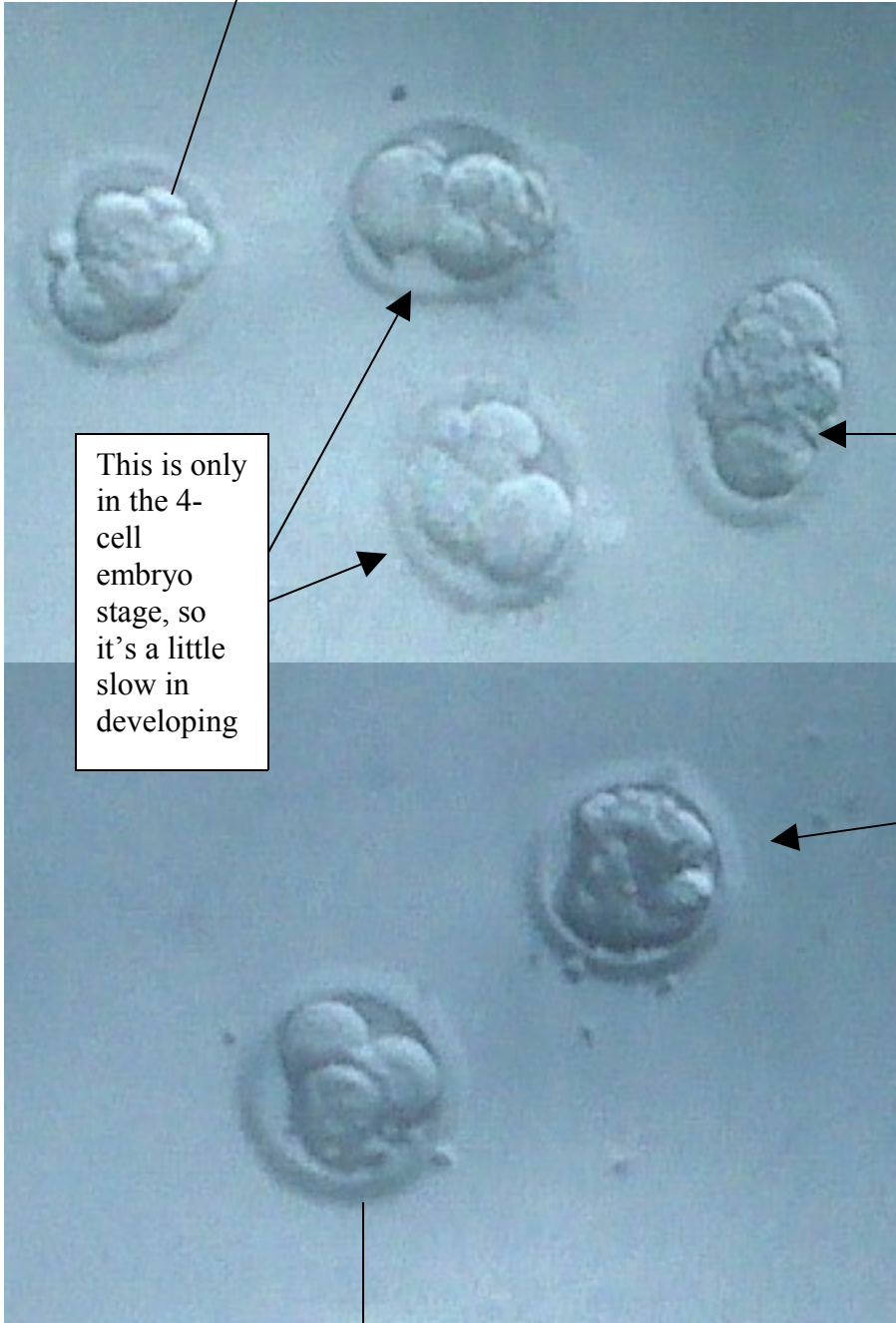


This is another grade "A" because it is exactly where it should be on day 3 – 8 cell embryo perfectly developed



This is only in the 4-cell embryo stage, so it's a little slow in developing

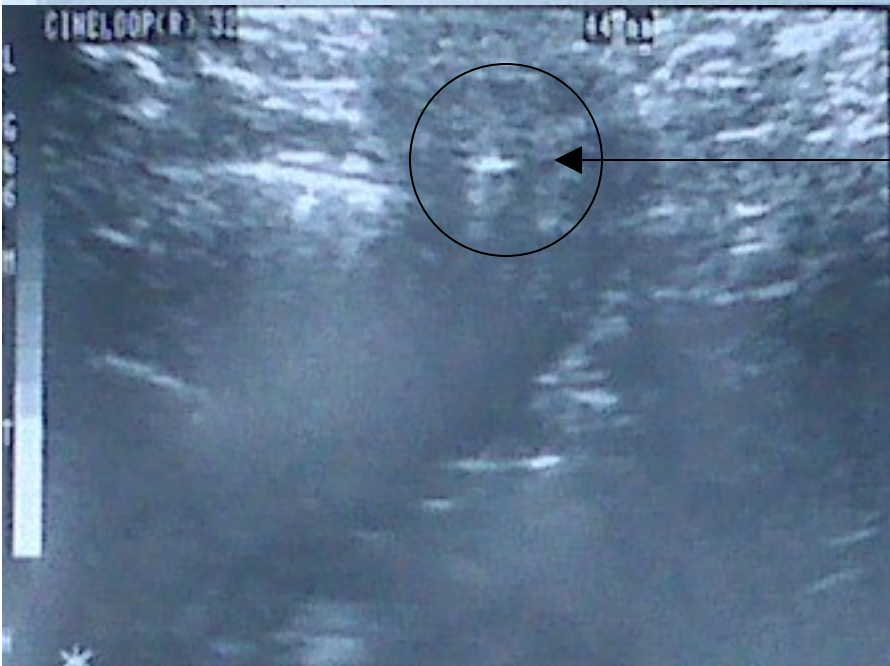
This is also in the Morula stage, but because the shape is oblong it's a grade B

Here is the best one of the batch. It is a grade "A" because in 72 hours it has developed into the Morula stage, which is way ahead of the other ones

This one is the slowest of the bunch. It is only most likely between a 2 cell and 4 cell embryo stage



Basically, all living things hatch out of a shell. Here you see the embryologist assisting the hatching process. The concept is that by helping the embryos escape from within their shells they can have an easier time implanting in the mother's uterine lining.



The white speck in the center of the circle is where the embryos were transferred in the uterus